



Law Enforcement and Investigation System

A crime may leave a proverbial “paper trail”, but when the probative information spans confiscated documents, electronic records, e-mail, wiretap transcripts, handwritten notes, audio files, and social network posts, how do you find “the smoking gun”?



What you didn't know you didn't know

How do you solve a jigsaw puzzle when – perhaps without your knowledge – you have the wrong pieces or missing pieces? Investigating crimes in the information era poses the same challenge.

In-depth investigations are not limited to lists of defined names and keywords. New findings are constantly being added to the domain of information, thereby fueling the exploration of new theories that will shape the evolution of the investigation.

As a further complication to investigating crimes in the information age, relevant pieces of evidence may have been deleted or destroyed. Out-of-context data can be misinterpreted. Misinformation may flow as freely as probative information. Pseudonyms and code words can go unnoticed. Irrefutable proof may be buried in an e-mail attachment that is essentially invisible without the right search tools.

The ZyLAB Law Enforcement & Investigation system provides the best tools to collect and process otherwise crippling amounts of data, to zero in on conclusive evidence, and to help investigators reveal angles they may not have considered.

Aggregate, examine, filter, and find more with ZyLAB

The ZyLAB Law Enforcement & Investigation system makes enormous data collections an asset to fraud investigators, law enforcement, and security professionals—rather than a crippling liability. The end-to-end system aggregates voluminous information, examines the entirety of the collection, and filters irrelevant content.

In parallel with the investigative process, the ZyLAB system collects and processes content from disparate storage media; then it offers forensic indexing, data enrichment, and robust technology to review, analyze, and disclose material evidence.

Whether you need to expose patterns and aliases in the data pool, extract concepts, exclude decoy data, or simply search for specific keywords, ZyLAB will accelerate and add greater insight to your investigation.



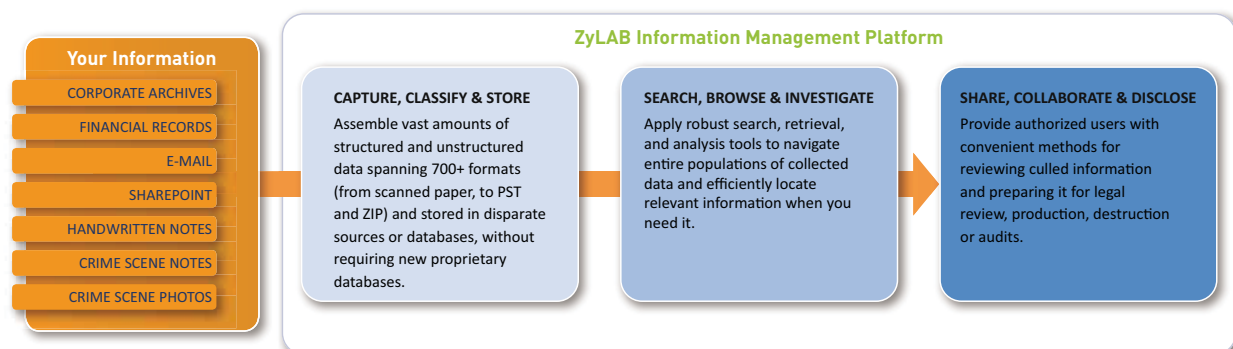
KEY ADVANTAGES OF THE SYSTEM:

- The fastest and most complete search engine on the market
- Reduces the time required to perform exploratory searches
- Enhances data retrieval reliability and finds what other systems cannot find
- Supports files in 700+ formats (including e-mail, wikis, blogs, etc.) and 400+ foreign languages
- Helps you find what you didn't know to look for

RESOLVE THE CHALLENGES OF DATA-RICH INVESTIGATIONS IN THE INFORMATION AGE

The ZyLAB Law Enforcement & Investigation system includes the popular ZyLAB Information Management Platform at its core. The platform full-text-indexes the selected storage areas (servers, local hard disks, databases, SharePoint and other repositories) and then yields a fully searchable archive spanning all of the data

sources and more than 700 file types. The system indexes data in more than 400 foreign languages and it provides automatic translation of 40 languages. And, its non-proprietary XML-based archiving retains native file formats and provides maximum scalability and flexibility.



Find and follow the “paper trail”

The linchpin to your investigation may be a code word used in a French document that was scanned and attached to an e-mail message years ago. The ZyLAB Law Enforcement & Investigation system leverages several high-tech tools to ensure that vital clue is found.

LEAVE NO STONE UNTURNED

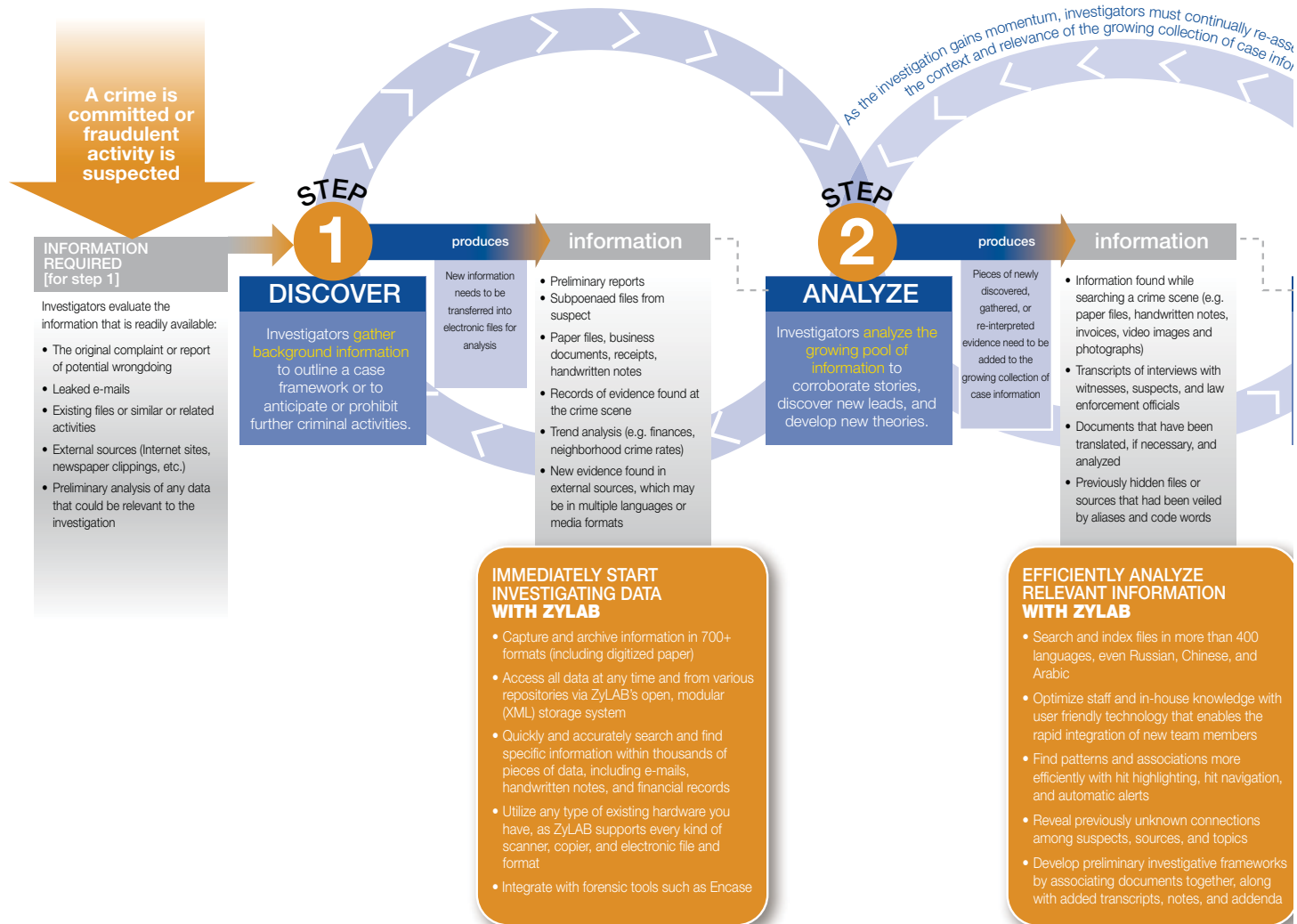
Our **eDiscovery tools** automate the collection of dispersed data—including e-mail and attachments, electronically stored information, and scanned paper. Even the content of an OCR'd document that was attached to an e-mail message and then nested in another e-mail thread will be searchable. The system includes culling, de-duplication, conversion and processing tools to put everything at the investigators' fingertips so they may consider the information from all angles and filter it as appropriate.

Our **Advanced Search tools** are optimized to retrieve anything that could be relevant—not only what the engine believes to be the “best” matches. The search techniques span everything from Booleans and proximity operators, to fuzzy and wildcard searches on keywords. Sophisticated search aids like relevance ranking make it easy to manage the results.

LOOK BEYOND THE OBVIOUS CLUES

Our **Analytics tools** add depth to the data so that investigators glean maximum insight from the collection. Foreign language and bitmap materials (e.g., scans, images) are translated and converted—thereby unlocking their content to enrich the analysis.

Metadata, including properties such as File Name, Author, Last Modified Date, and File Type, can be mined to enhance the collection.



Professional Text Mining extracts facts from the content and reveals the presence of potentially relevant patterns in the text, such as company names, possible aliases, addresses, bank accounts, or social security numbers.

Data Visualization tools add dimension and context to static information: Locations can be displayed on a Google Map®; hidden relationships among people can be revealed in a dynamic Hyperbolic Tree; the significance of topics can be deduced based on their relative size on a Tree Map.

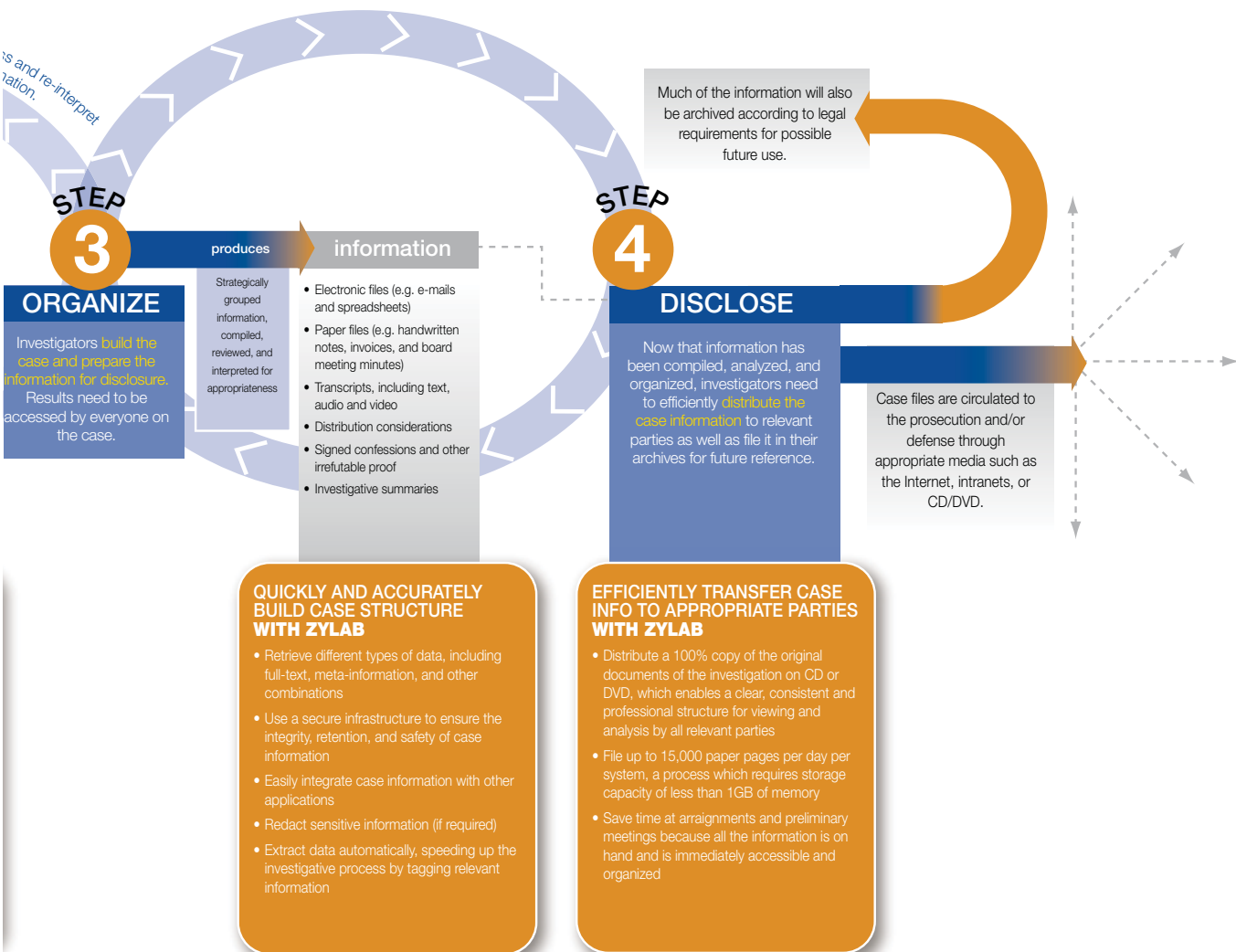
RECALIBRATE AS YOU GO

Our **XML framework** provides a dynamic environment from which to search the initial collection as well as the new information that is compiled during the life of the case. New evidence populates the existing search archives to ensure the analysis spans every

available fact, file, and discovery – perhaps taking the investigation in a new direction. Plus, the XML foundation protects the integrity of the information and ensures the native files are easily accessible now, for trial, or if the investigation is reopened in the future.

SUMMARIZE YOUR FINDINGS

Our **TIFF Archiving & Production tools** make it easy to lock-down or present the collection of data. Investigators may produce excerpts of data in order to disclose key findings to 3rd parties, or they may archive the complete collection while awaiting formal pretrial action. The electronic files may be batch-converted into user-defined production formats, such as TIFF, along with metadata, Bates numbers, and load files for easy import into litigation software.



“Merging complex digital evidence with hard-copy documents is becoming a de facto part of our work. ZyLAB’s tools provide the accountants, lawyers and investigators with a fast and reliable interface to manage these investigations. They can search, analyze and retrieve vast amounts of information in a timely manner.”

– Johan ten Houten, Manager Forensic Investigations, Deloitte Enterprise Risk Services and Forensic & Dispute Services

“Laws, regulations, freedom of information requests to government agencies, HR investigations and special investigations when the company suspects internal fraud or mismanagement, all call for a uniform process that in many cases is not in place.”

– Gartner “The Road to EIM: E-Discovery as a First Project” by Debra Logan and Tim Johnson, February 6, 2009

“Now [with ZyLAB software], we always find what we are looking for.... The system is so automatic that it even handles mixed language documents all in the same batch. We didn’t see any other system that could perform like this.”

– Commander Bart Driessen, Amsterdam-Amstelland (Holland) Police Force

Investigative tools fine-tuned by investigators

Many of the most prominent law enforcement agencies and security professionals count on ZyLAB’s Law Enforcement & Investigation system to create transparency in their data collections, enabling them to retrieve specific stored information in just a few seconds. Considering current worldwide security initiatives, more and more organizations are choosing the ZyLAB Law Enforcement & Investigation system as their primary tool to process, translate and distribute intelligence information in over 400 languages, including Eastern-European (Cyrillic), Arabic, and Asian languages (non-Western characters).

In fact, the ZyLAB solution was built in close partnership with the following groups:

- Law enforcement, national security and immigration, and anti-terrorism units,
- Intelligence bureaus and investigative bodies,
- Criminal prosecution teams, particularly those tackling fraud and financial impropriety,
- UN War Crime tribunals.

Current clients include the U.S. Department of Homeland Security, U.S. Department of Defense, New Scotland Yard, the FBI team investigating the Enron case, and forensic accounting firms like KPMG, Deloitte, and PricewaterhouseCoopers.



LEARN MORE

To learn more about the full spectrum of ZyLAB’s investigative, eDiscovery and Information Management technology, call 1-866-ZYLAB-NA (995-2262) or visit zylab.com to find an authorized reseller.

McLean, Virginia (US HQ) | New York City | San Francisco

Visit zylab.com to locate our international offices.



© 2010 ZyLAB North America. All rights reserved. ZyLAB is a registered trademark. Registration and trademarks belong to their respective owners.